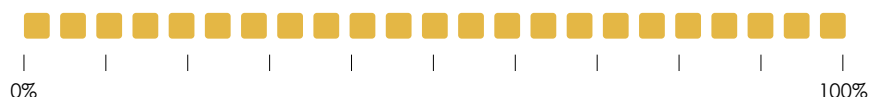


FERTILPOLLINA®

SEMI-HUMIFIED PELLET

Organic matrix from humified mixture of manure
(Poultry manure)



PACKAGING BAG kg 25 on kg 1500 pallet
BIG BAGS kg 500
BULK



FERTILPOLLINA® / Features:

- Humus, ready-to-use, deriving exclusively from the mixing and humification of selected manure, (poultry manure) which have undergone a process of Fermentation/Humification for 5 months.
- **Has not undergone any artificial drying process (with the use of ovens or hot air).**
- The best results are obtained by distributing the product immediately before last tilling procedures, mixing it to the earth during pre-sowing or pre-transplanting stage; in particular, it must be spread in open field at a minimum depth of 2 cm and a maximum of 15 cm; the use of same on tree cultivations must be carried out at a distance from the trunk of 18/20 cm and depth of 10/15 cm.
- Should fertilization be carried out on grass orchards (natural lawns or re-sown between each line), the product must be spread homogeneously on the surface; a subsequent grass mowing may prove useful in order to accelerate dissolution of product.
- It may also be distributed on cultivation remains (straws, maize stalks) before they are buried in order to facilitate disintegration of same, favouring microbiological activity involved in the ground.
- Thanks to the exclusive process of fermentation, **FERTILPOLLINA®** do not contains any residues classified as waste, sludges or other industrial residues.

CORRECT USAGE

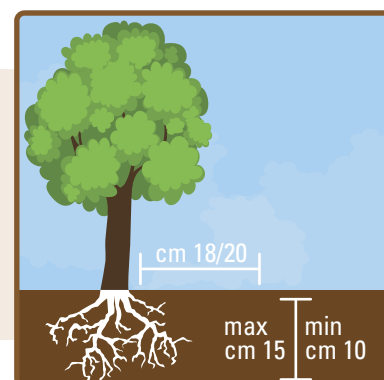
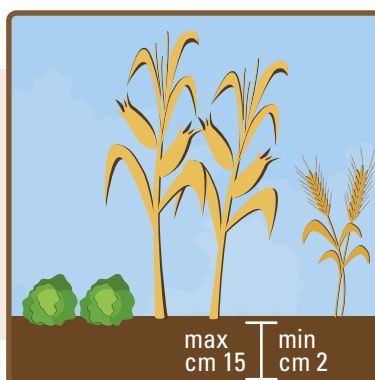
OPEN FIELD

Depth MIN 2 cm, MAX 15 cm

ARBOREAL CULTURES

Distance from the trunk: 18/20 cm

Depth MIN 10 cm, MAX 15 cm



AVERAGE CONTENT ON THE SUBSTANCE AS SUCH

Total organic nitrogen (N)	3,5-4,5%	Organic carbon (C) from biological origins	25-28%
Total phosphorus pentoxide (P ₂ O ₅)	3-4%	Umified organic substance	54-60%
Total potassium oxide (K ₂ O)	2-3%	pH	6-7

DOSAGES AND USAGE

Cultivation:

Advised dosage:

Wheat/Barley/Other cereals	Kg 1000-1200 per ha
Oat/Rice	Kg 1000-1200 per ha
Maize	Kg 1800-2000 per ha
Soya	Kg 1000-1200 per ha
Beet	Kg 1800-2000 per ha
Cultivation of oil-seeds/ Aromatics and Officinal herbs	Kg 1000-1500 per ha
Green Fodder/Medical cultivation	Kg 1000-1500 per ha
Horticulture/Industrial cultivation	Kg 1800-2000 per ha
Strawberries	Kg 1800-2000 per ha
Artichokes	Kg 1800-2000 per ha
Floral cultivation	Kg 1500-1800 per ha
Orchards/Citrus fruit orchards (young plants)	Kg 0,5-1,0 per plant
Orchards/Citrus fruit orchards (plants under production)	Kg 2-3 per plant
Vineyards (young plants)	Kg 0,5 per plant
Vineyards (plants under production)	Kg 1,0-2,0 per plant
Olive and palm groves	Kg 800-1000 per ha
Olive groves - old plantation	Kg 3-5 per plant
Green lawns/parks	max. 250 g per m ²
Golf links/sportsgrounds	max. 250 g per m ²

DOSES EXAMPLES

Wheat/Barley/Rice/Soya/Other cereals

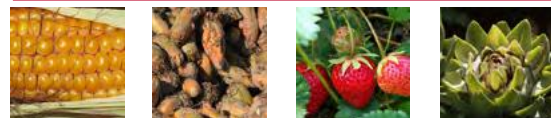
kg/ha



1000
1500

Maize/Beet/Strawberries/Artichokes

kg/ha



1800
2000

Fertilpollina® composition: Turkey manure - Poultry manure.

Basic fertilization:

0,200 kg per sq.mt. equivalent to 2000 kg per hectare.

Cover fertilization:

0,100 kg per sq.mt. equivalent to 1000 kg per hectare.

The crops indicated are representative of each category; **FERTILPOLLINA®** can be used for numerous other types by employing the same method.

Product should not be in contact with plant's roots. The product is for professional use only. **Keep out of reach of children and animals**



The analytical data written on packaging follow the instruction of the regulation in force. All data included in this publication are indicative. FOMET reserves the right to change them without prior notice.

Properly dispose of packaging.

FOMET
Growing Equipment since 1973

Responsible Care®
OUR COMMITMENT TO SUSTAINABILITY



ASSOCIATA
FEDERCHIMICA
ASSOFERTIZZANTI

ASSOCIATA
FEDERCHIMICA
ASSOFERTIZZANTI

ASSOCIATA
FEDERCHIMICA
ASSOFERTIZZANTI

ASSOCIATA
FEDERCHIMICA
ASSOFERTIZZANTI

ASSOCIATA
FEDERCHIMICA
ASSOFERTIZZANTI

ASSOCIATA
FEDERCHIMICA
ASSOFERTIZZANTI

ASSOCIATA
FEDERCHIMICA
ASSOFERTIZZANTI

ASSOCIATA
FEDERCHIMICA
ASSOFERTIZZANTI

ASSOCIATA
FEDERCHIMICA
ASSOFERTIZZANTI

ASSOCIATA
FEDERCHIMICA
ASSOFERTIZZANTI

ASSOCIATA
FEDERCHIMICA
ASSOFERTIZZANTI

ASSOCIATA
FEDERCHIMICA
ASSOFERTIZZANTI

ASSOCIATA
FEDERCHIMICA
ASSOFERTIZZANTI

ASSOCIATA
FEDERCHIMICA
ASSOFERTIZZANTI

Impianto riconosciuto al
senso del Reg.CE 1069/09
n. ABP1029UFERT2
n. ABP1029UFERT3

ASSOCIATA
FEDERCHIMICA
ASSOFERTIZZANTI

ASSOCIATA
FEDERCHIMICA
ASSOFERTIZZANTI

ASSOCIATA
FEDERCHIMICA
ASSOFERTIZZANTI

ASSOCIATA
FEDERCHIMICA
ASSOFERTIZZANTI

ASSOCIATA
FEDERCHIMICA
ASSOFERTIZZANTI

ASSOCIATA
FEDERCHIMICA
ASSOFERTIZZANTI

ASSOCIATA
FEDERCHIMICA
ASSOFERTIZZANTI

ASSOCIATA
FEDERCHIMICA
ASSOFERTIZZANTI

Via Vialarga, 25 37050
S. Pietro di Morubio (Vr) ITALY-UE
Tel. 045 6969004 - Fax 045 6969012
fomet@fomet.it - www.fomet.it